

207160540125	<b>Papanicolaou EA – 36</b>	Cytoplasmic staining of gynaecological and non-gynaecological samples.	125 mL
207160540250			250 mL
207160540500			500 mL
207160550125	<b>Papanicolaou EA – 65</b>	Counterstain with Haematoxylin Stains in Papanicolaou Staining procedure.	125 mL
207160550250			250 mL
207160550500			500 mL
207160560125	<b>Papanicolaou OG - 6</b>	Cytoplasmic staining for the keratinized cells in the Papanicolaou staining method.	125 mL
207160560250			250 mL
207160560500			500 mL

### OTHER ANALYTICAL REAGENTS

CAT. NO.	PRODUCT NAME	DESCRIPTION	PACK SIZE
207020600500	<b>Bouin's Fixative</b>	Used as a fixative for Histological specimens.	500 mL
207020610500	<b>Buffered Formalin 10%</b>	Used as routine fixative for fixing cytological or histological specimens.	500 ml
207020615000		5000 mL	
207030410050	<b>CytoFix fixative</b>	Commonly used fixative for Cytological specimens.	50 mL
207060250500	<b>Formal Saline</b>	Used for routine histopathology.	500 mL
207060255000			5000 mL
207040250100	<b>DPX Mountant</b>	For preserving stains in specimen slides.	100 mL
207040260500	<b>Dacie's (RBC Diluting) Fluid</b>	Used as diluting fluid for blood specimens to count RBCs in microscopy by hemocytometry.	500 mL
207080090500	<b>Hayem's (RBC Diluting) Fluid</b>	Diluting fluid for RBC count.	500 mL
207090110025	<b>Immersion Oil</b>	Used in light microscopy, to increase the resolution of microscope.	25 mL
207090110100			100 mL
207161060500	<b>Phosphate Buffer (pH 7)</b>	Ready to use buffering solution used in routine staining techniques.	500 mL
207230060500	<b>WBC Diluting Fluid</b>	Diluting fluid for WBC count.	500 mL
207230070010	<b>Weiss buffer</b>	Buffer for staining.	10 mL

### STAINS AVAILABLE IN READY TO USE KITS

CAT. NO.	PRODUCT NAME	DESCRIPTION	PACK SIZE
207011030125	<b>Albert's Stain Kit</b>	Ready to use combi kit for observing metachromatic granules.	2 x 125 mL
207060240500	<b>Field Stain Kit</b>	Ready to use combi kit of Field Stain A & Field Stain B with fixative for with staining of blood smears.	2 x 500 mL
207070160125	<b>Gram Stain Kit</b>	Ready to use combi kit to differentiate between Gram-positive and Gram-negative bacteria.	4 x 125 mL
207070440250	<b>Giemsa Stain Kit</b>	Ready to use combi kit for cytogenetics and histopathological diagnosis.	2 x 250 mL
207070440500			2 x 500 mL
207120670250	<b>Leishman Stain Kit</b>	Ready to use combi kit used in microscopy for staining of blood smears.	2 x 250 mL
207120670500			2 x 500 mL
207131700125	<b>May Grunwald-Giemsa (MGG) Stain Kit</b>	Ready to use combi kit for staining of blood, bone marrow smears and clinical cytological specimens.	2 x 125 mL
207080190125	<b>H &amp; E Stain Kit</b>	Ready to use combi kit for routine diagnosis in the study of histochemical tissue pathology.	2 x 125 mL
207210050250	<b>ULTRA – PAP</b>	Ultra-fast Papanicolaou Staining kit.	250 smears

\* For Detailed configuration refer pack insert

**Microexpress**

Division of

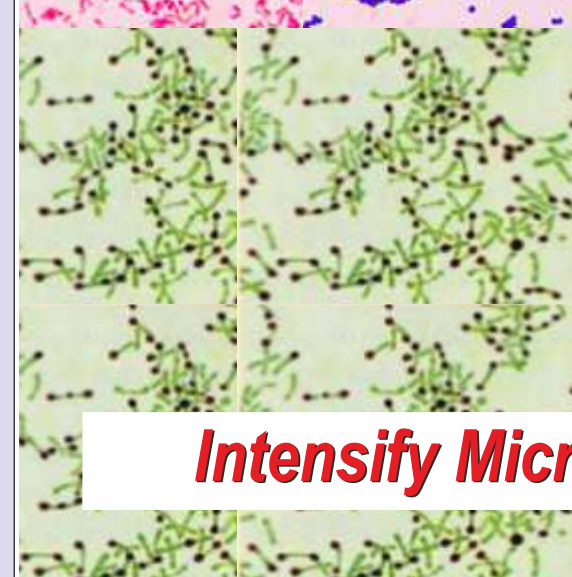
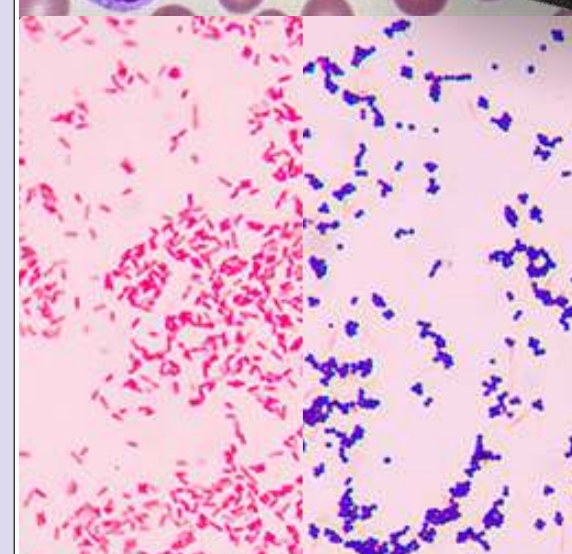
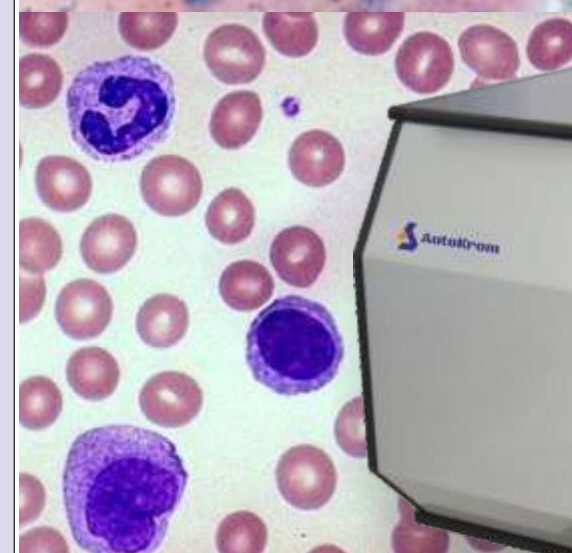
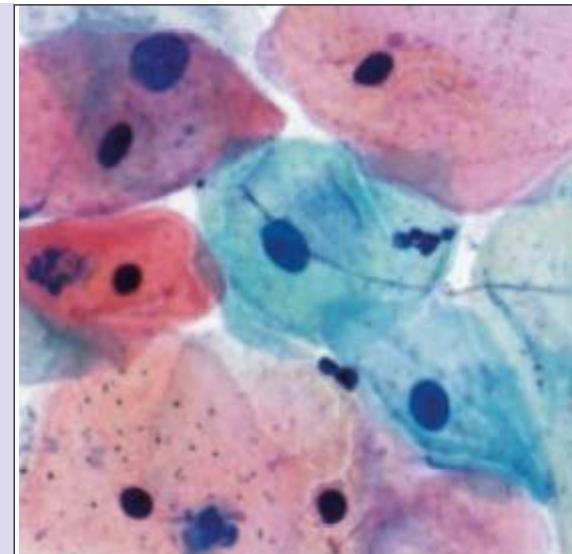
**T TULIP DIAGNOSTICS (P) LTD.**

a PerkinElmer company

Plot No. S-124, S-125, S-126, Utility Plot No. VIII, Phase III-B, Verna Industrial Estate, Verna, Goa - 403 722, INDIA.

Regd. Office: Gitanjali, Tulip Block, Dr. Antonio do Rego Bagh, Alto Santacruz, Bambolim Complex Post Office, Goa - 403 202, INDIA.

Email: mex.queries@tulipgroup.com; Website: www.microexpress.in



**Microexpress**



## AUTOMATED SLIDE STAINER

**STAINING MADE FASTER & EASIER**

A Complete Range of Stains for Successful Identification!

- Cytology and Histology
- Haematology
- Microbiology and Mycobacteriology
- Other Analytical Reagents
- ULTRA-PAP Stain Kit



An ISO 13485 Certified Company

**Intensify Microscopy with Clarity...!**



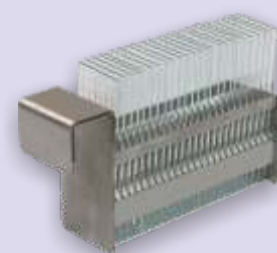
### FEATURES

- Fully automated slide stainer
- **LOAD & WALKAWAY**
- Designed to fit in all Lab setups
- 12 stations to meet all staining requirement
- Ideal for routine microbiological and haematological staining techniques
- Can be customized for Cytological and Histological staining techniques



### BENEFITS

- Enhances contrast in microscopic images.
- Highlights structural details of biological tissues for true differentiation and distinction.
- Enhances cytoplasmic clarity and transparency.
- Enhanced ease and speed of preparation.
- No compromise on reproducibility.



Rack RV-25



Trough with Lid (PP)



Trough with Rack

PRODUCT NAME	CAT. NO.	DESCRIPTION	PACK SIZE
AutoKrom™-12-25	210011010001	Fully automated slide staining machine with 12 reagent stations	1 Unit

### TECHNICAL SPECIFICATIONS

Overall number of stations	12
	1 drying station (adjustable temperature from +40° C to ~ +60° C)
	1 station with flow-through trough (tap water)
	10 combined stations (for troughs with reagents or for racks with slides)
Blotter	1 (for blotting the bottom side of a rack and slides ends)
Number of slides in a rack	25
Volume of reagent in a trough	210 mL
Control and monitoring	Color touch-screen
Max. number of Staining Programs	32
Max. number of program steps	30
Dimensions (L / W / H)	650 × 540 × 330 mm
Weight	22 kg
Power supply	230 V / 50 Hz / 400 VA

### SAFETY

- Internal ventilation system with connection either to an external ventilation system to a charcoal filter
- Electronic sensor which stops the process if the lid is open
- Overflow sensor in the flow-through trough
- Water consumption control device with solenoid valve

### STAINS FOR MICROBIOLOGY AND MYCOBACTERIOLOGY

CAT. NO.	PRODUCT NAME	DESCRIPTION	PACK SIZE
207010500100	Albert's Stain A	Used for observing metachromatic granules.	100 mL
207010510100	Albert's Stain B	Used for observing metachromatic granules.	100 mL
203010450500	Acid Fast Decolorizer	3% Concentrated HCl in 95% Ethanol for decolorization of Acid-Fast smears.	500 mL
203030340125	Carbol Fuchsin Strong (1 %)	Used as a dye to detect acid fast bacteria.	125 mL
203030340250			250 mL
203030340500			500 mL
207070170125	Gram Crystal Violet	Used as staining solution for monochrome staining of microbes.	125 mL

207070170250			250 mL
207070170500			500 mL
207070171000			1000 mL
207070180125	Gram Decolorizer	Used as a decolourizing solution in Gram staining.	125 mL
207070180250			250 mL
207070180500			500 mL
207070190100	Gram Iodine	Used as a mordant in Gram staining.	100 mL
207070200125	Gram Safranin 0.5%	Used as a counterstain in Gram staining.	125 mL
207070200250			250 mL
207070200500			500 mL
207120390100	Lactophenol Cotton Blue	Used for wet mount and staining of fungi.	100 mL
207120400100	Lactophenol Picric Acid	Used for wet mount and staining of fungi.	100 mL
207120410100	Lugol's Iodine	Used for wet mount & other Haematology staining.	100 mL
207131010125	Malachite Green 1%	Bacterial endospore staining & simple staining.	125 mL
203130850125	Methylene Blue (Aqu) 1 %	General purpose biological stain & spore staining.	125 mL
203130850250			250 mL
203130850500			500 mL
203130880125	Mycostain®	AFB stain set for screening of <i>M. tuberculosis</i> and <i>M. leprae</i> .	3 x 125 mL
203140170025	Novachrom®	Rapid two step cold AFB stain.	2 x 25 mL
207140210250	Nigrosin (10%)	Used for negative staining of bacteria.	250 mL
207160530100	Picric Acid	Used as a fixing agent and for staining of fungi.	100 mL

### STAINS FOR HAEMATOLOGY

CAT. NO.	PRODUCT NAME	DESCRIPTION	PACK SIZE
207020590100	Brilliant Cresyl Blue	For staining reticulocytes (immature red blood cells) and platelets	100 mL
207060220250	Field Stain A	Histological method for staining of blood smears.	250 mL
207060220500			500 mL
207060221000			1000 mL
207060230250	Field Stain B	Histological method for staining of blood smears.	250 mL
207060230500			500 mL
207060231000			1000 mL
207070210250	Giemsa Stain	For cytogenetics and histopathological diagnosis.	250 mL
207070210500			500 mL
207070211000			1000 mL
207120420250	Leishman Stain	Used in microscopy for staining of blood smears.	250 mL
207120420500			500 mL
207120421000			1000 mL
207131020250	May Grunwald	For staining of blood, bone marrow smears and clinical cytological specimens.	250 mL
207131020500			500 mL
207230050250	Wright's Stain	Used for staining of peripheral blood and bone marrow smears.	250 mL
207230050500			500 mL

### STAINS FOR CYTOLOGY AND HISTOLOGY

CAT. NO.	PRODUCT NAME	DESCRIPTION	PACK SIZE
207050320125	Eosin (Aqu.) 2%	Used as monochrome for bacterial staining and as a counter stain for hematoxylin.	125 mL
207050320250			250 mL
207050320500			500 mL
207080070125	Hematoxylin Harris	Used as nuclear stain for Immuno-histochemical and cytochemical staining.	125 mL
207080070250			250 mL
207080070500			500 mL
207080080125	Hematoxylin Gills II	Used for nuclear staining in histology and cytology.	125 mL
207080080250			250 mL
207080080500			500 mL