

207160540125	<b>Papanicolaou EA – 36</b>	Cytoplasmic staining of gynaecological and non-gynaecological samples.	125 mL
207160540250			250 mL
207160540500			500 mL
207160550125	<b>Papanicolaou EA – 65</b>	Counterstain with Haematoxylin Stains in Papanicolaou Staining procedure.	125 mL
207160550250			250 mL
207160550500			500 mL
207160560125	<b>Papanicolaou OG - 6</b>	Cytoplasmic staining for the keratinized cells in the Papanicolaou staining method.	125 mL
207160560250			250 mL
207160560500			500 mL

#### OTHER ANALYTICAL REAGENTS

CAT. NO.	PRODUCT NAME	DESCRIPTION	PACK SIZE
207020600500	<b>Bouin's Fixative</b>	Used as a fixative for Histological specimens.	500 mL
207020610500	<b>Buffered Formalin 10%</b>	Used as routine fixative for fixing cytological or histological specimens.	500 ml
207020615000			5000 mL
207030410050	<b>CytoFix fixative</b>	Commonly used fixative for Cytological specimens.	50 mL
207060250500	<b>Formal Saline</b>	Used for routine histopathology.	500 mL
207060255000			5000 mL
207040250100	<b>DPX Mountant</b>	For preserving stains in specimen slides.	100 mL
207040260500	<b>Dacie's (RBC Diluting) Fluid</b>	Used as diluting fluid for blood specimens to count RBCs in microscopy by hemocytometry.	500 mL
207080090500	<b>Hayem's (RBC Diluting) Fluid</b>	Diluting fluid for RBC count.	500 mL
207090110025	<b>Immersion Oil</b>	Used in light microscopy, to increase the resolution of microscope.	25 mL
207090110100			100 mL
207161060500	<b>Phosphate Buffer (pH 7)</b>	Ready to use buffering solution used in routine staining techniques.	500 mL
207230060500	<b>WBC Diluting Fluid</b>	Diluting fluid for WBC count.	500 mL
207230070010	<b>Weiss buffer</b>	Buffer for staining.	10 mL

#### STAINS AVAILABLE IN READY TO USE KITS

CAT. NO.	PRODUCT NAME	DESCRIPTION	PACK SIZE
207011030125	<b>Albert's Stain Kit</b>	Ready to use combi kit for observing metachromatic granules.	2 x 125 mL
207060240500	<b>Field Stain A &amp; Field Stain B with Fixative Spray</b>	Ready to use combi kit of Field Stain A & Field Stain B with fixative for with staining of blood smears.	2 x 500 mL
207070160125	<b>Gram Stain Kit</b>	Ready to use combi kit to differentiate between Gram-positive and Gram-negative bacteria.	4 x 125 mL
207070440250	<b>Giemsa Stain Kit</b>	Ready to use combi kit for cytogenetics and histopathological diagnosis.	2 x 250 mL
207070440500			2 x 500 mL
207120670250	<b>Leishman Stain Kit</b>	Ready to use combi kit used in microscopy for staining of blood smears.	2 x 250 mL
207120670500			2 x 500 mL
207131700125	<b>May Grunwald-Giemsa (MGG) Stain Kit</b>	Ready to use combi kit for staining of blood, bone marrow smears and clinical cytological specimens.	2 x 125 mL
207080190125	<b>H &amp; E Stain Kit</b>	Ready to use combi kit for routine diagnosis in the study of histochemical tissue pathology.	2 x 125 mL
207210050250	<b>ULTRA – PAP</b>	Ultra-fast Papanicolaou Staining kit.	250 smears

\* For Detailed configuration refer pack insert

An ISO 13485 Certified Company  
**Microxpress**

Division of

**T TULIP DIAGNOSTICS (P) LTD.**

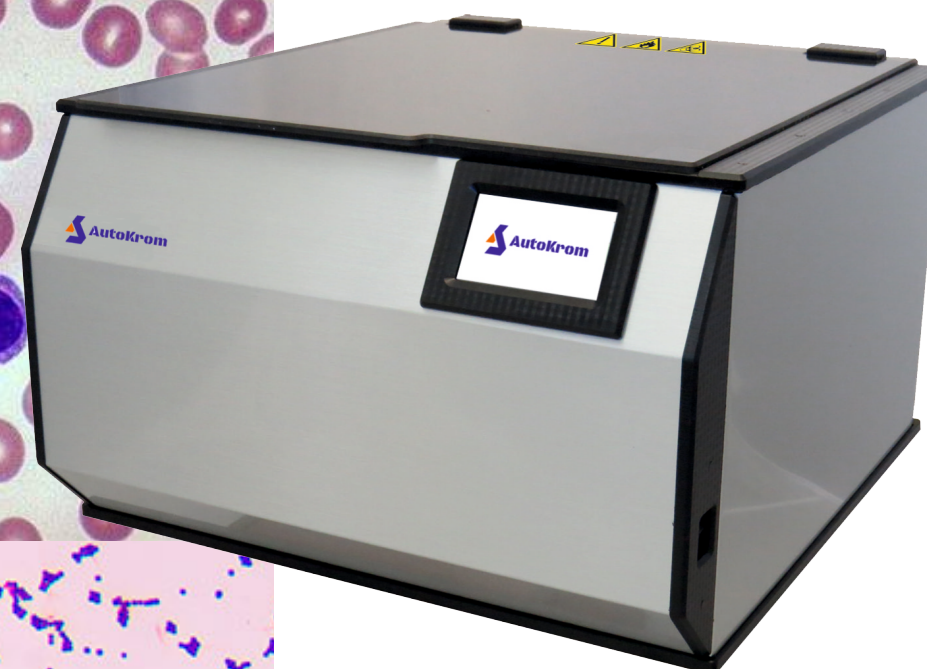
Plot No. S-124, S-125, S-126, Utility Plot No. VIII, Phase III-B, Verna Industrial Estate, Verna, Goa - 403 722, INDIA.

Regd. Office: Gitanjali, Tulip Block, Dr. Antonio do Rego Bagh, Alto Santacruz, Bambolim Complex Post Office, Goa - 403 202, INDIA.

Email: mex.queries@tulipgroup.com; Website: www.microxpress.in

**Microxpress**

**AutoKrom**



**AUTOMATED  
SLIDE  
STAINER**

**STAINING MADE  
FASTER & EASIER**

**A Complete Range of Stains for Successful Identification!**

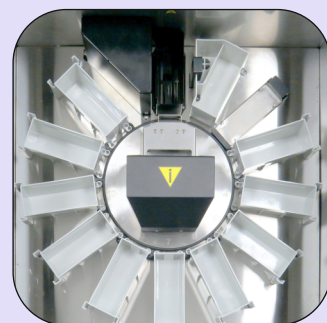
- Cytology and Histology
- Haematology
- Microbiology and Mycobacteriology
- Other Analytical Reagents
- ULTRA-PAP Stain Kit

**Intensify Microscopy with Clarity...!**



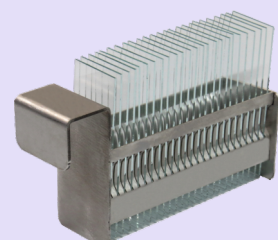
### FEATURES

- Fully automated slide stainer
- **LOAD & WALKAWAY**
- Designed to fit in all Lab setups
- 12 stations to meet all staining requirement
- Ideal for routine microbiological and haematological staining techniques
- Can be customized for Cytological and Histological staining techniques



### BENEFITS

- Enhances contrast in microscopic images.
- Highlights structural details of biological tissues for true differentiation and distinction.
- Enhances cytoplasmic clarity and transparency.
- Enhanced ease and speed of preparation.
- No compromise on reproducibility.



Rack RV-25



Trough with Lid (PP)



Trough with Rack

PRODUCT NAME	CAT. NO.	DESCRIPTION	PACK SIZE
AutoKrom™-12-25	210011010001	Fully automated slide staining machine with 12 reagent stations	1 Unit

### TECHNICAL SPECIFICATIONS

Overall number of stations	12
	1 drying station (adjustable temperature from +40° C to ~ +60° C)
	1 station with flow-through trough (tap water)
	10 combined stations (for troughs with reagents or for racks with slides)
Blotter	1 (for blotting the bottom side of a rack and slides ends)
Number of slides in a rack	25
Volume of reagent in a trough	210 mL
Control and monitoring	Color touch-screen
Max. number of Staining Programs	32
Max. number of program steps	30
Dimensions (L / W / H)	650 × 540 × 330 mm
Weight	22 kg
Power supply	230 V / 50 Hz / 400 VA

### SAFETY

- Internal ventilation system with connection either to an external ventilation system to a charcoal filter
- Electronic sensor which stops the process if the lid is open
- Overflow sensor in the flow-through trough
- Water consumption control device with solenoid valve

### STAINS FOR MICROBIOLOGY AND MYCOBACTERIOLOGY

CAT. NO.	PRODUCT NAME	DESCRIPTION	PACK SIZE
207010500100	<b>Albert's Stain A</b>	Used for observing metachromatic granules.	100 mL
207010510100	<b>Albert's Stain B</b>	Used for observing metachromatic granules.	100 mL
203010450500	<b>Acid Fast Decolorizer</b>	3% Concentrated HCl in 95% Ethanol for decolorization of Acid-Fast smears.	500 mL
203030340125	<b>Carbol Fuchsin Strong (1 %)</b>	Used as a dye to detect acid fast bacteria.	125 mL
203030340250		250 mL	
203030340500		500 mL	
207070170125	<b>Gram Crystal Violet</b>	Used as staining solution for monochrome staining of microbes.	125 mL

207070170250			250 mL
207070170500			500 mL
207070171000			1000 mL
207070180125	<b>Gram Decolorizer</b>	Used as a decolourizing solution in Gram staining.	125 mL
207070180250		250 mL	
207070180500		500 mL	
207070190100	<b>Gram Iodine</b>	Used as a mordant in Gram staining.	100 mL
207070200125	<b>Gram Safranin 0.5%</b>	Used as a counterstain in Gram staining.	125 mL
207070200250		250 mL	
207070200500		500 mL	
207120390100	<b>Lactophenol Cotton Blue</b>	Used for wet mount and staining of fungi.	100 mL
207120400100	<b>Lactophenol Picric Acid</b>	Used for wet mount and staining of fungi.	100 mL
207120410100	<b>Lugol's Iodine</b>	Used for wet mount & other Haematology staining.	100 mL
207131010125	<b>Malachite Green 1%</b>	Bacterial endospore staining & simple staining.	125 mL
203130850125	<b>Methylene Blue (Aqu) 1 %</b>	General purpose biological stain & spore staining.	125 mL
203130850250		250 mL	
203130850500		500 mL	
203130880125	<b>Mycostain®</b>	AFB stain set for screening of <i>M. tuberculosis</i> and <i>M. leprae</i> .	3 x 125 mL
203140170025	<b>Novachrom®</b>	Rapid two step cold AFB stain.	2 x 25 mL
207140210250	<b>Nigrosin (10%)</b>	Used for negative staining of bacteria.	250 mL
207160530100	<b>Picric Acid</b>	Used as a fixing agent and for staining of fungi.	100 mL

### STAINS FOR HAEMATOLOGY

CAT. NO.	PRODUCT NAME	DESCRIPTION	PACK SIZE
207020590100	<b>Brilliant Cresyl Blue</b>	For staining reticulocytes (immature red blood cells) and platelets	100 mL
207060220250	<b>Field Stain A</b>	Histological method for staining of blood smears.	250 mL
207060220500			500 mL
207060221000			1000 mL
207060230250	<b>Field Stain B</b>	Histological method for staining of blood smears.	250 mL
207060230500			500 mL
207060231000			1000 mL
207070210250	<b>Giemsa Stain</b>	For cytogenetics and histopathological diagnosis.	250 mL
207070210500			500 mL
207070211000			1000 mL
207120420250	<b>Leishman Stain</b>	Used in microscopy for staining of blood smears.	250 mL
207120420500			500 mL
207120421000			1000 mL
207131020250	<b>May Grunwald</b>	For staining of blood, bone marrow smears and clinical cytological specimens.	250 mL
207131020500			500 mL
207230050250	<b>Wright's Stain</b>	Used for staining of peripheral blood and bone marrow smears.	250 mL
207230050500			500 mL

### STAINS FOR CYTOLOGY AND HISTOLOGY

CAT. NO.	PRODUCT NAME	DESCRIPTION	PACK SIZE
207050320125	<b>Eosin (Aqu.) 2%</b>	Used as monochrome for bacterial staining and as a counter stain for hematoxylin.	125 mL
207050320250			250 mL
207050320500			500 mL
207080070125	<b>Hematoxylin Harris</b>	Used as nuclear stain for Immuno-histochemical and cytochemical staining.	125 mL
207080070250			250 mL
207080070500			500 mL
207080080125	<b>Hematoxylin Gills II</b>	Used for nuclear staining in histology and cytology.	125 mL
207080080250			250 mL
207080080500			500 mL