

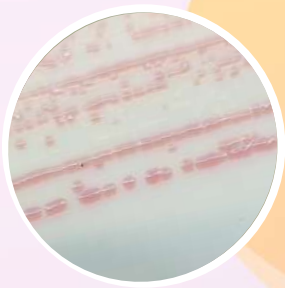
**Microxpress<sup>®</sup>**

# ***Chromogenic UTI Agar***

*Chromogenic UTI Agar provide differentiation and presumptive identification of common urinary tract infection isolates*



**Simplified Rapid Microbiology**



*Escherichia coli* - Light Pink / Dark Pink to Light Red colonies



*Klebsiella pneumoniae* - Metallic blue / Indigo / Purple, mucoid colonies



*Enterococcus faecalis* - Greenish Blue to Blue, small colonies



*Proteus mirabilis* - Orangish Brown colonies with halo



*Pseudomonas aeruginosa* - Transparent colonies with halo, may have green fluorescence



*Staphylococcus aureus* - Opaque White to Cream colonies

**Microexpress® Chromogenic UTI Agar** provide a reliable and rapid tool for the presumptive identification of urinary pathogens.

The formulations contain **chromogenic mixture** which are cleaved by the **β-galactosidase** and **β-glucosidase enzymes** produced by *E. coli*, *Enterococcus* species and *coliforms*. These specific enzyme reactions cleave the chromogens giving a range of diagnostic colours.

The β-galactosidase activity of *E. coli* and *Staph. saprophyticus*, results in pink/red colonies and the β-glucosidase activity of enterococci produces blue/turquoise colonies; the activity of both enzymes on coliforms gives dark blue/purple colonies.

Tryptophan deaminase activity produces a brown halo around colonies of *Proteus* species. Most other organisms exhibit their natural pigmentation.

### **SAVES TIME..**

Presumptive identification of UTI organisms in 16 to 24 hours

### **SUPERIOR PERFORMANCE..**

The only medium to clearly differentiate between coliforms and Enterococci

### **CONVENIENT AND EASY TO USE..**

Improved colours aid interpretation

### **REDUCED COSTS..**

Minimises confirmatory testing

**Microexpress® Chromogenic UTI Agar** *in vitro* diagnostic use only, by experienced microbiologists. They must not be used beyond the stated expiry date, or if the product shows any sign of deterioration.

Presumptive identification of *E.coli* can be confirmed using a rapid indole test (DMAC), for same day results.

Rapid transportation and culture or preservation of samples is essential for reliable laboratory diagnosis. Clinical presentation should always be taken into consideration when diagnosing urinary tract infection.

\* For detailed configuration refer pack insert.

An ISO 13485 Certified Company

**Microexpress®**

Division of



**TULIP DIAGNOSTICS (P) LTD.**

**Factory:** Plot No. S-124, S-125, Utility Plot No. VIII, Phase III-B, Verna Industrial Estate, Verna, Goa – 403 722, INDIA.

**Regd. Office:** Gitanjali, Tulip Block, Dr. Antonio Do Rego Bagh, Alto Santacruz, Bambolim Complex P.O., Goa – 403 202, INDIA.

**Email:** mex.queries@tulipgroup.com **Website:** www.microexpress.in